



Frederick Avenue, Peasedown St John, Bath, BA2 8JA

£289,950

- **Three Bed Terrace**
- **Beautifully Presented Throughout**
- **Ample Parking**
- **Large Private Rear Garden**
- **Close Commuting Distance To The City Of Bath**
- **Energy Rating - D**
- **Council Tax Band - B**
- **Tenure - Freehold**

BARONS are delighted to present this beautifully maintained three-bedroom terraced home, ideally positioned in the sought-after village of Peasedown St John, just moments from Bath.

Combining comfort, style, and practicality, this charming property is perfectly suited to families, couples, or those simply seeking extra space. The ground floor features a bright and spacious living/dining room, a modern fitted kitchen, a useful utility area, and a convenient cloakroom. Upstairs, you'll find three well-proportioned bedrooms and a contemporary family bathroom with a sleek white suite.

A standout feature of this home is the generous, enclosed rear garden—a superb private space for children to play, alfresco entertaining, or enjoying a bit of gardening. Additional highlights include off-street parking, gas central heating, uPVC double glazing throughout, and the added benefit of free daytime energy generated by roof-mounted solar panels.

Peasedown St John offers a wonderful range of local amenities, reputable schools, and excellent transport links to Bath and surrounding areas, making this an exceptional choice for modern family living.

Early viewing is highly recommended. To arrange a viewing, please call 01761 411 411.

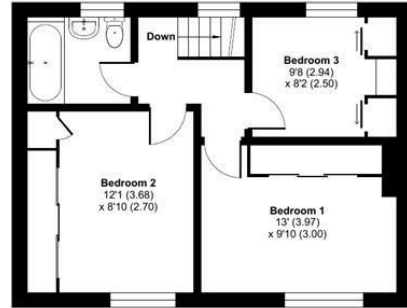




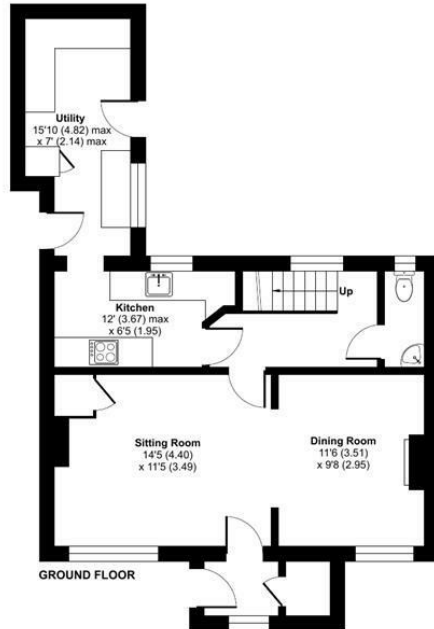
Frederick Avenue, Peasedown St. John, Bath, BA2

Approximate Area = 1047 sq ft / 97.2 sq m

For identification only - Not to scale

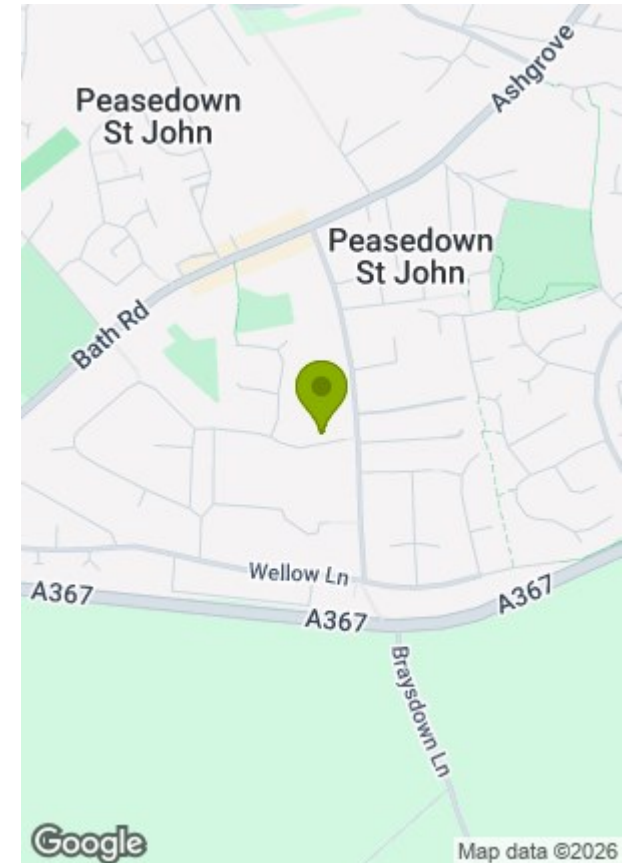


FIRST FLOOR

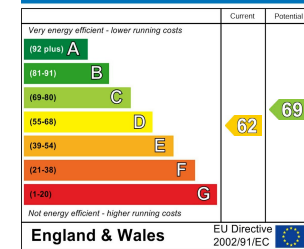


GROUND FLOOR

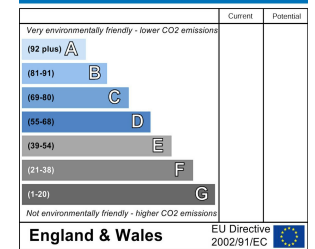
Floor plan produced in accordance with RICS Property Measurement Standards incorporating International Property Measurement Standards (IPMS2 Residential). © nichcom 2025. Produced for Barons Property Centre. REF: 1375036



Energy Efficiency Rating



Environmental Impact (CO₂) Rating



These particulars, whilst believed to be accurate are set out as a general outline only for guidance and do not constitute any part of an offer or contract. Intending purchasers should not rely on them as statements of representation of fact, but must satisfy themselves by inspection or otherwise as to their accuracy. No person in this firm's employment has the authority to make or give any representation or warranty in respect of the property.